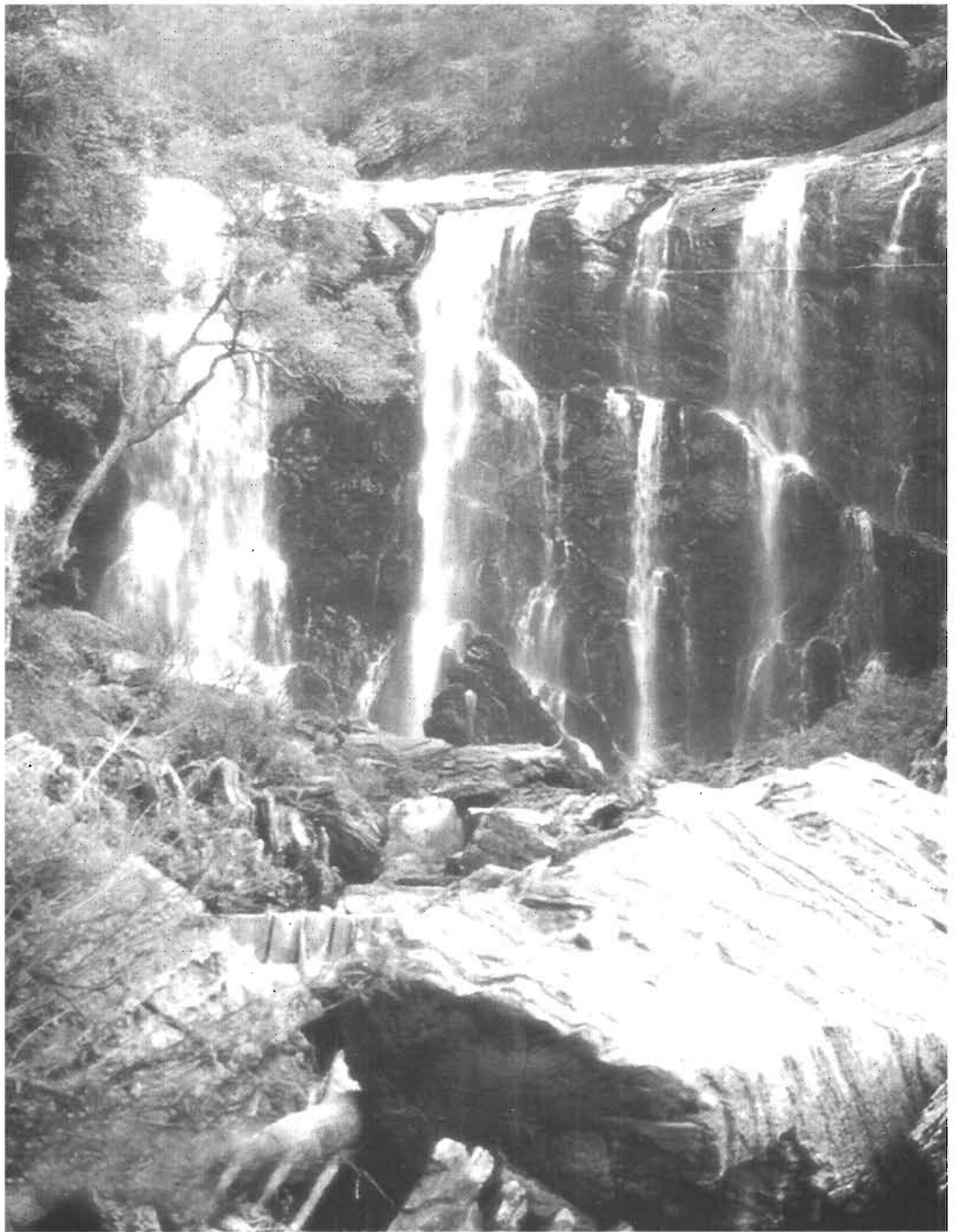




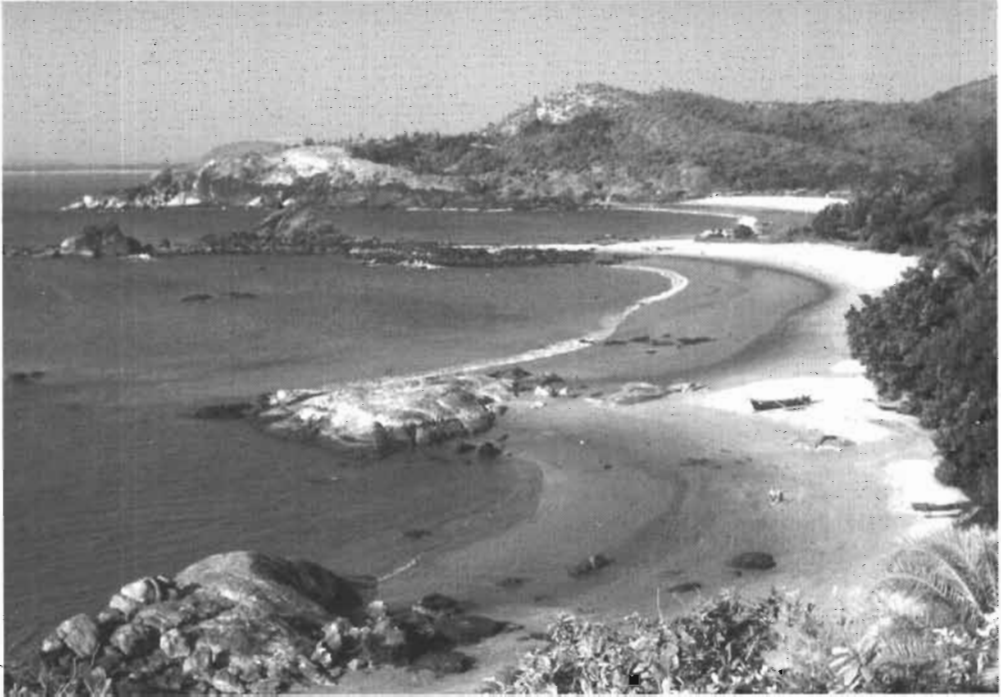
Enchanting view of Yana Hills, Kumta taluk



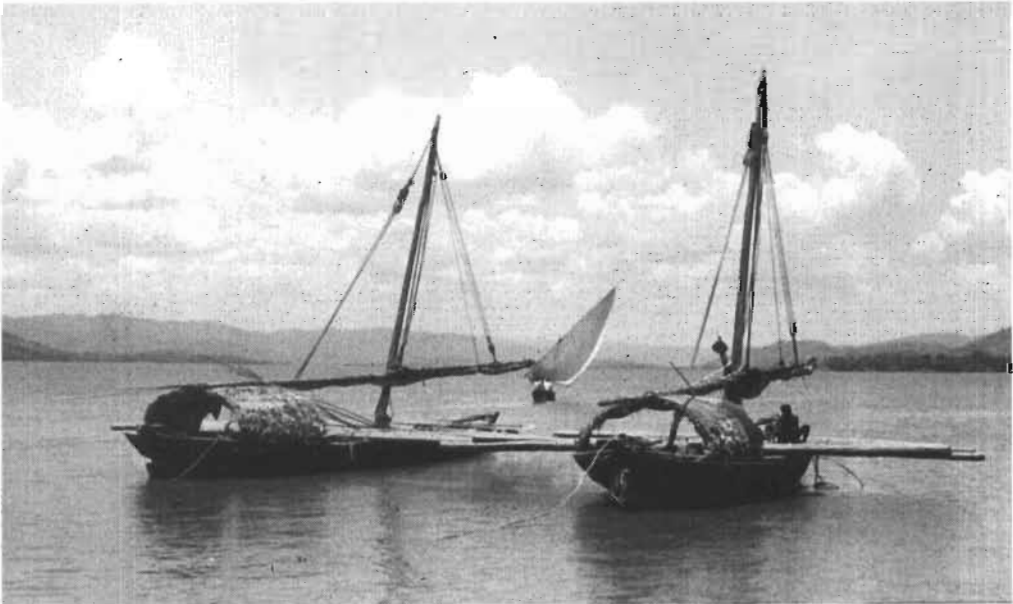
A panoramic view of Syntheri Rocks, near Ganesh Gudi



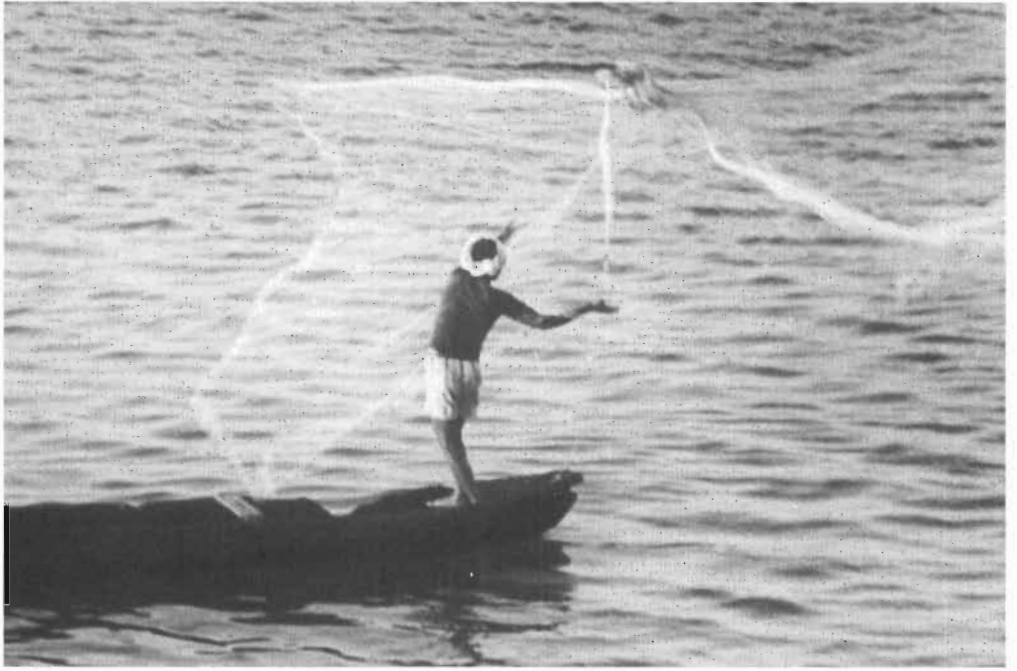
The Picturesque Sathody Falls near Yallapur



An Aerial view of the Om Beach, North Kanara



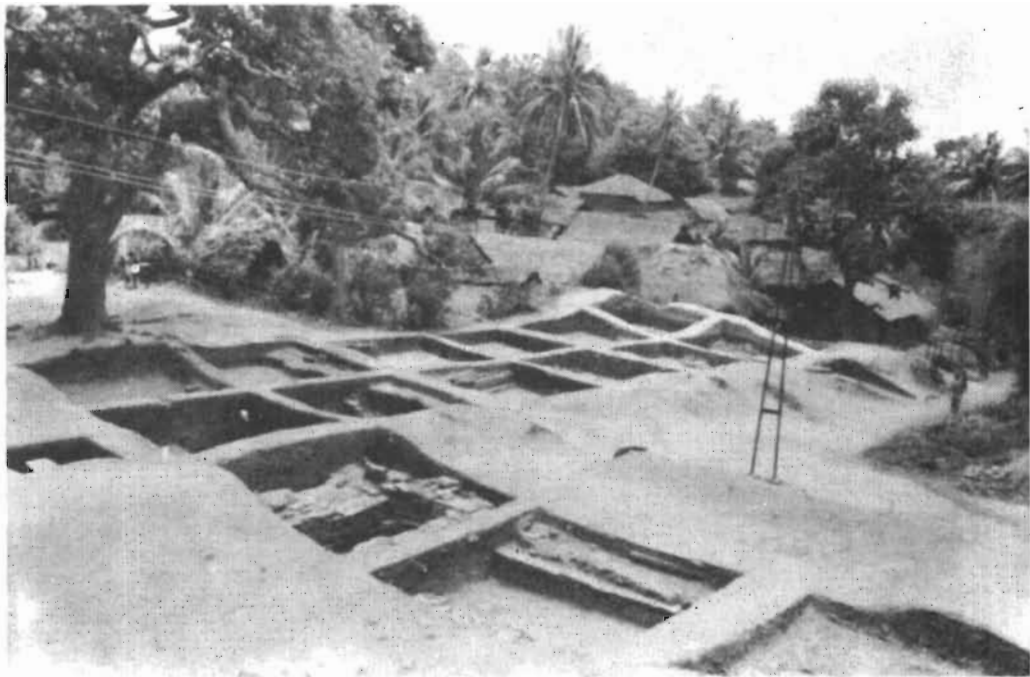
Boats at Karwar port near Sadashivaghad pass



A fisherman in action at a beach Near Honnavar



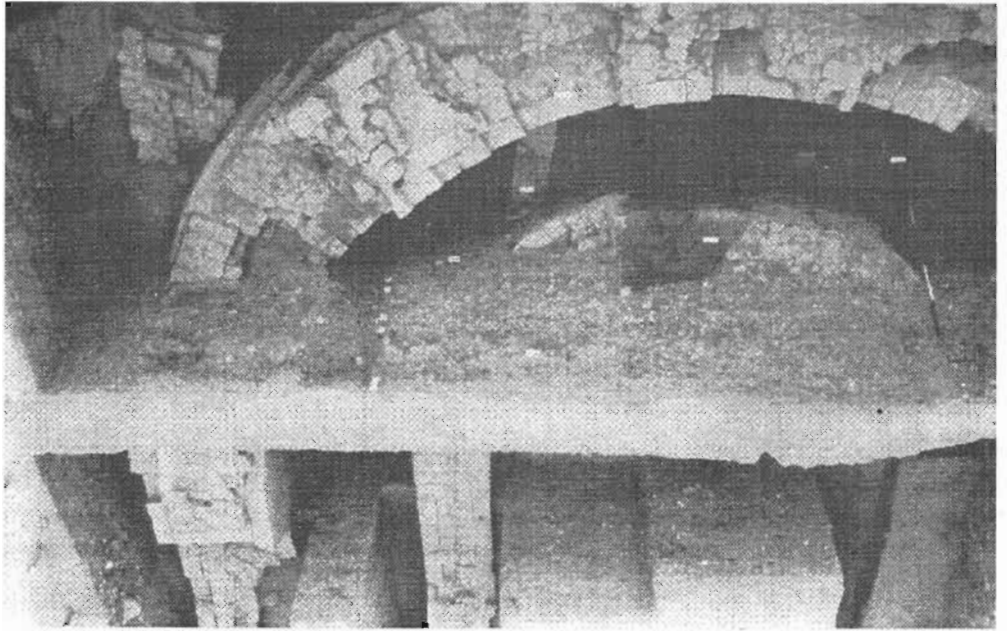
A view of fisheries processing, North Kanara



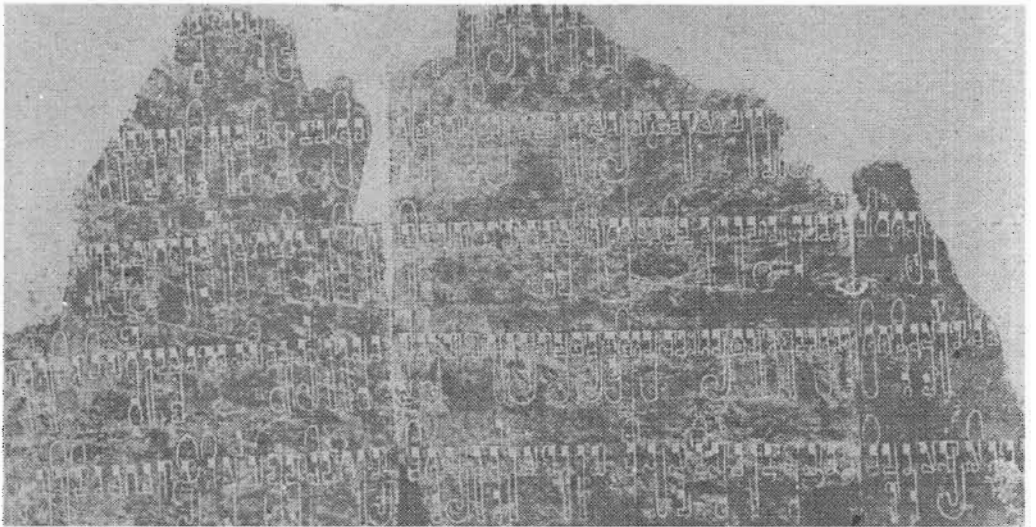
A view of the Excavation Site, Gudnapur



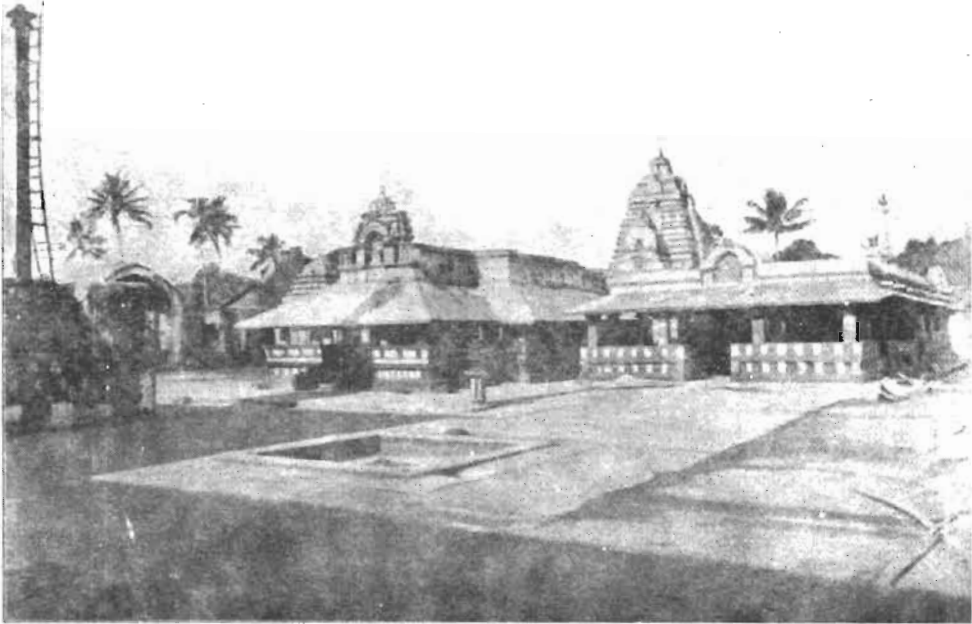
Artifacts found during excavations at Gudnapur



Excavation site, showing walls Banavasi



Kadamba Inscription of Mrigeshavarman found at Banavasi



A Front view of the Madhukeshwara Temple, Banavasi



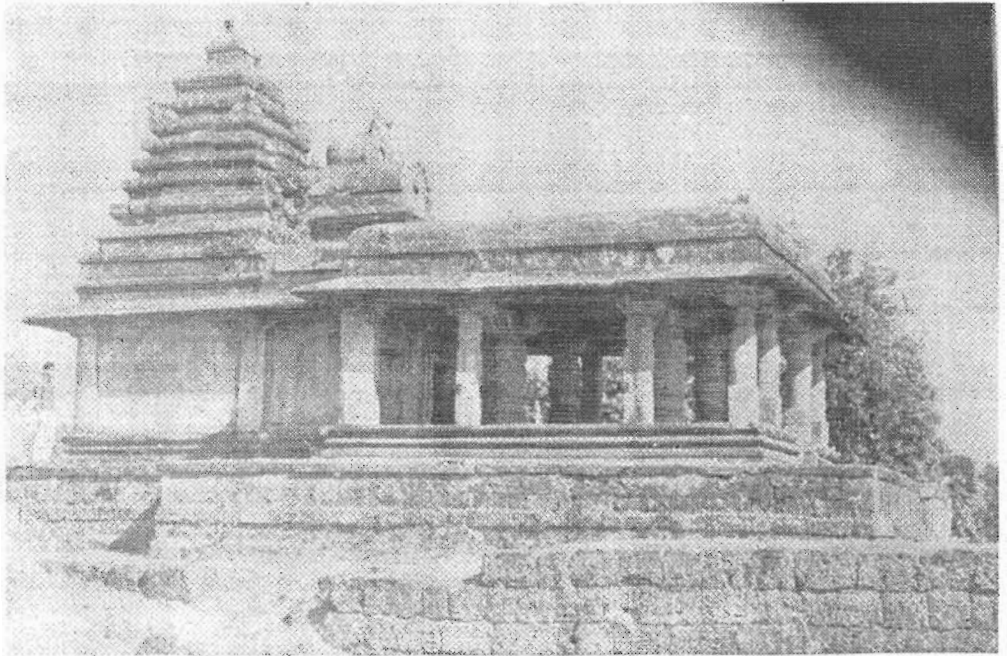
An Interior view of the Navaranga of the Madhukeshwara temple, Banavasi



Adi Madhava, Madhukeshwara Temple



Saraswati, Madhukeshwara Temple



Adi Madhukeshwara Temple, all from Banavasi

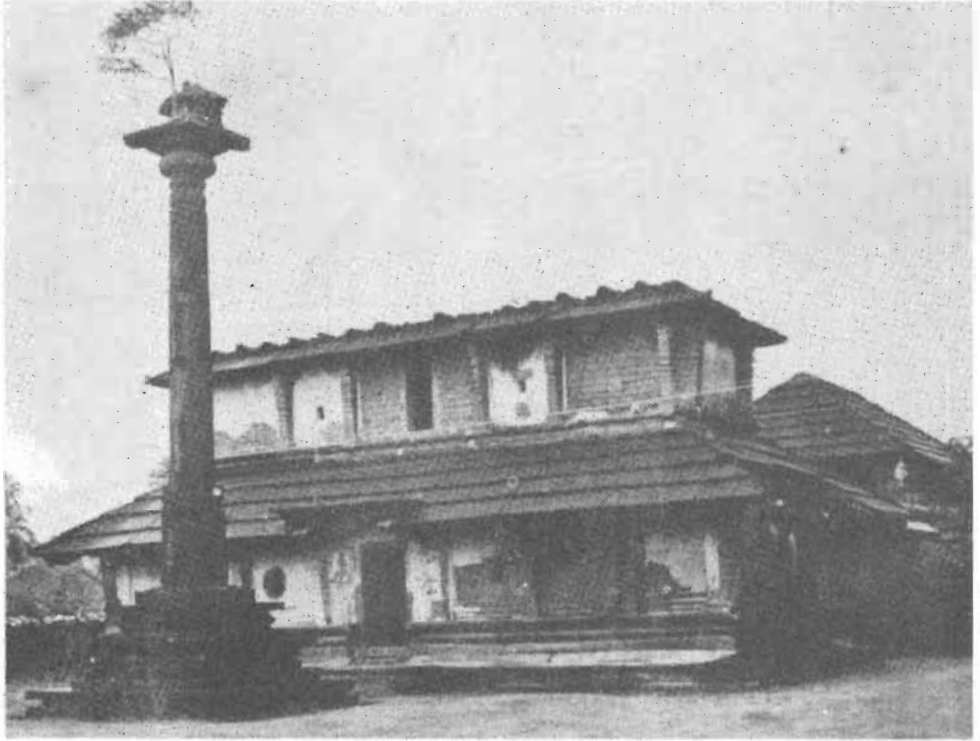




Vijayanagara Inscription from Banawasi



Sahasralinga amidst the Shalmala river, Sonda



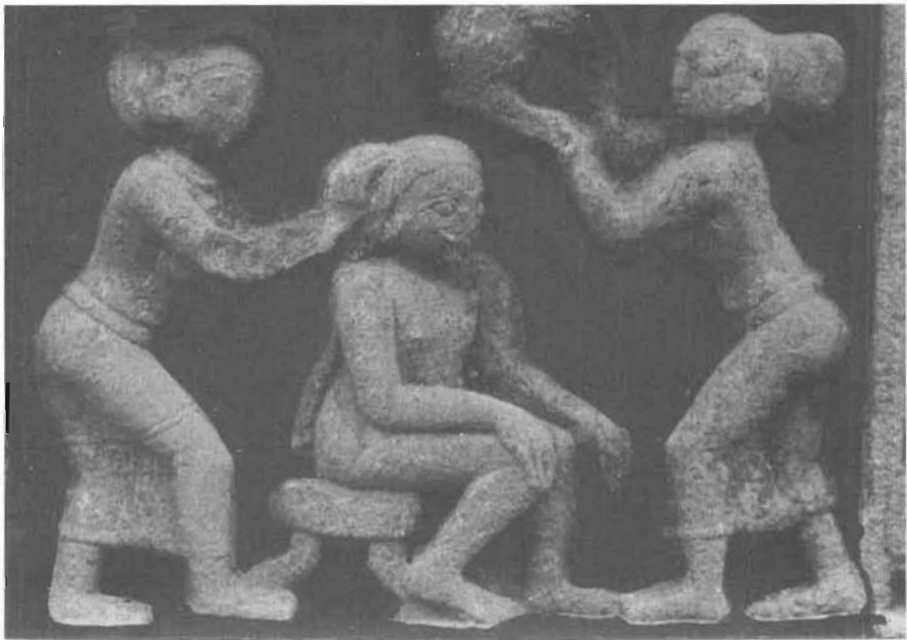
Chandranatha Basadi, Bhatkal



A side view of the Mahamaya Temple, Ankola



Ketapai Narayana Temple, Bhatkal



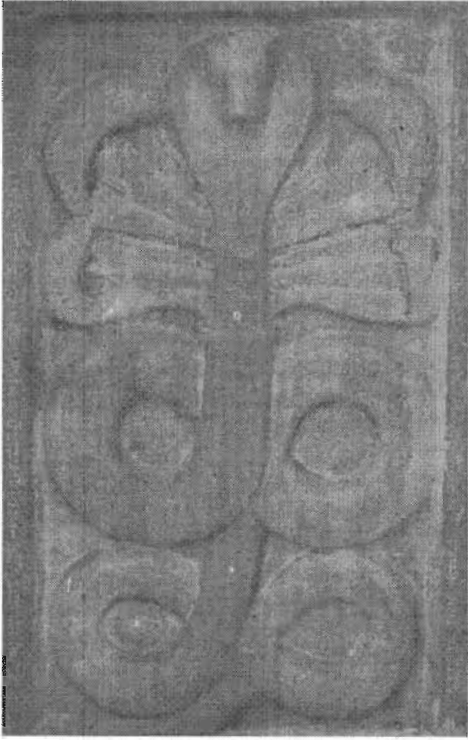
A Wall Sculpture from Ketapai Narayana Temple, Bhatkal



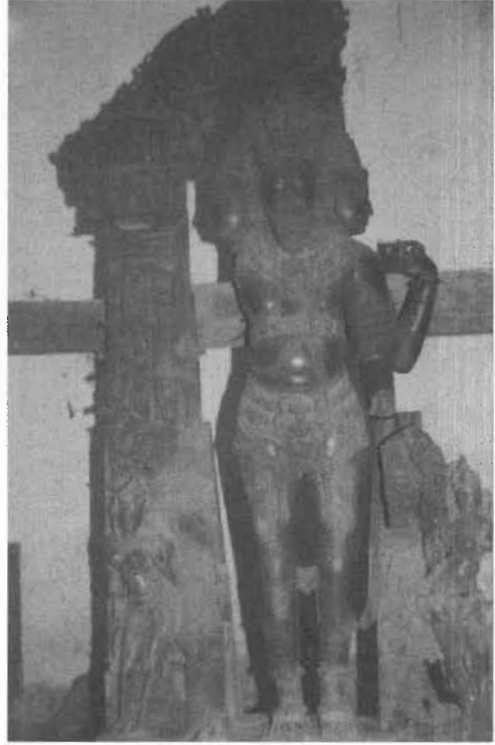
An aerial view of the Brindavana of Saint Vadiraja, Sonda



An aerial view of a Dravidian Style Temple, Murudeshwar



Naga sculpture from Banavasi



Brahma image from Gokarna



Gosasa stones from yasale near Sirsi



Bhairava from Bakkala



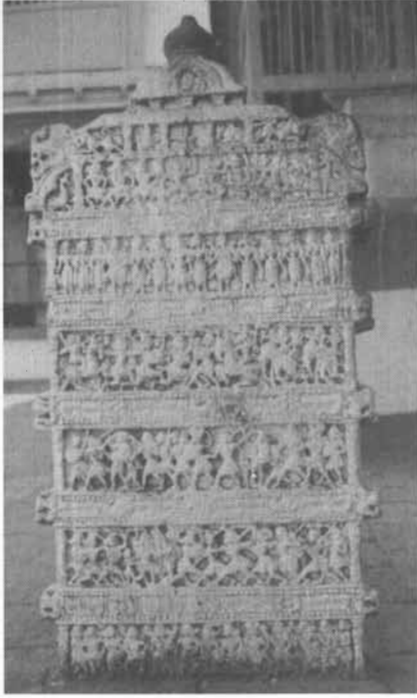
Mahishamardini from Bakkala



Clay model of Dohara Kakkaiyah in Ulvi Temple



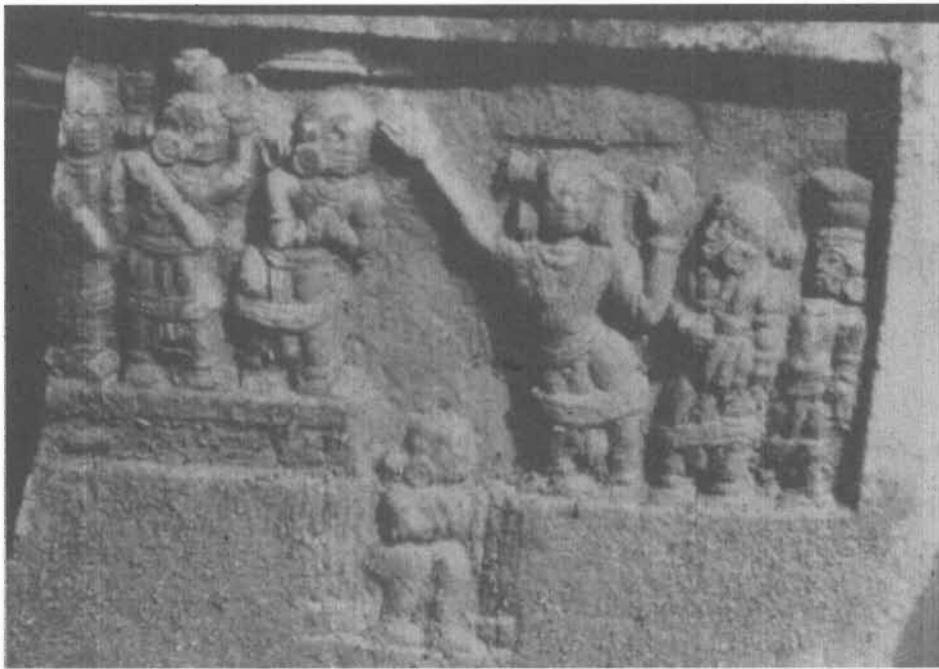
Clay model of Ayadakki Maraiyah in Ulvi Temple



Hero stone depicting a fierce Battle from Gokarna



Hero stone from Honnavar



Mahasati stone from Bakkala near Sonda



Kavi art from Malasa Narayani temple, Kumta



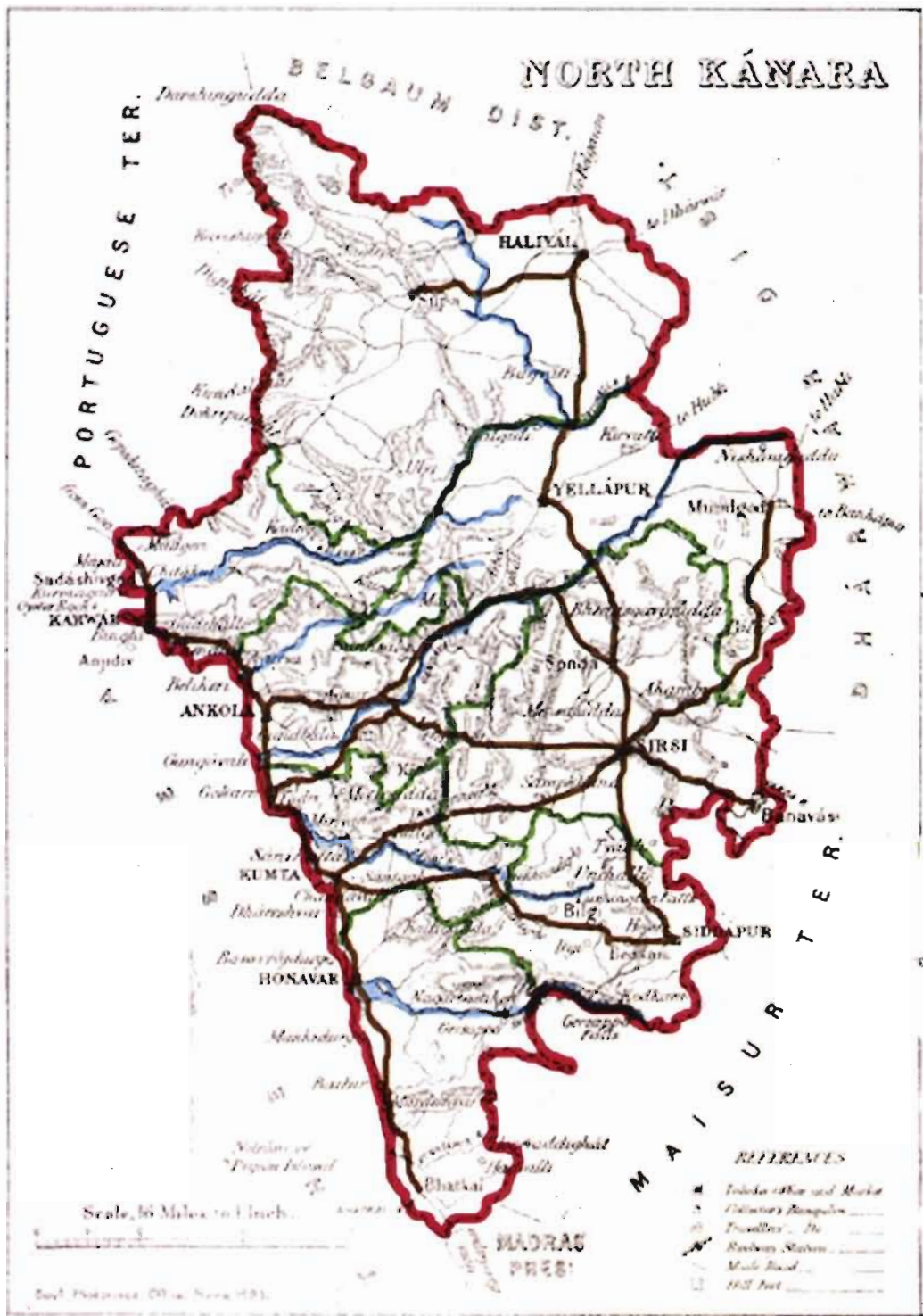
Suggi dancer from North Kanara



Yakshagana performer from North Kanara



# NORTH KANARA



Genl. Postoffice Office, No. 101.